

EVENTS IN RETROSPECT

- ☼ Wednesday 10th April 2001 - A.G.M. at Bank of Ireland Arts Centre, Foster Place followed by a lecture by Declan MacGonagle and a reception kindly hosted by The Bank of Ireland.
- ☼ Thursday 30th May 2001 - Presentation of Ralph Cusack painting and reception kindly hosted by Dún Laoghaire-Rathdown County Council.
- ☼ Saturday 15th June 2001 - A visit to St. Patrick's College, Maynooth with Dr. John GilMartin as our guide followed by a visit to Straffan Lodge.

NEW ACQUISITIONS

see illustrations overleaf.

CURRENT EXHIBITIONS

National Photographic Archive - Heirs & Graces - Clonbrook House.
National Museum - Eileen Gray : Designer and Architect.
National Gallery of Ireland - American Beauty Exhibition - until 15th September.
Hugh Lane Municipal Gallery of Modern Art - Bacon Studio.
Sligo - Model Arts and Niland Gallery - Grace Weir - sculpture - until 5th August.
R.H.A. Gallery - Mike FitzHarris - paintings.
Ulster Museum - The Fashion Show - until 10th November.
IMMA - The Táin Tapestries - Louis le Brocqy - until 26th January.
Crawford Municipal Gallery, Cork - Patrick Scott retrospective - until 10th August
Waterford - various venues - Artists in Glass - until 29th September.

ANNUAL SUBSCRIPTIONS

Your payment on time of the annual subscription is hugely important to the continued success of the work of the Friends. If you have forgotten to pay your subscription please forward a cheque to the Hon. Treasurer, Aidan O'Flanagan, 28 Grosvenor Park, Rathmines, Dublin 6.

Our current rates are:- Individual - €26; Family - €38 or Life - €508.

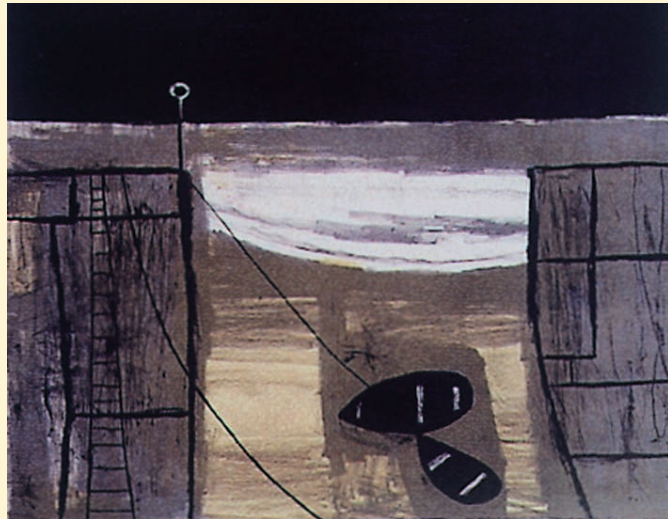
DONATIONS/BEQUESTS

Donations and bequests are becoming an increasingly important part of the operation of the Friends. The Friends are recognised by the Revenue Commissioners under Section 45 of the Finance Act, 2001 as an eligible charity (No. 5214) for the purpose of tax relief. Accordingly, donations which are made to the F.N.C.I., either by an individual or by a Company, of €250 or more in any one year (including where the donation is paid by instalments, e.g. by Bank Standing Order), qualify for tax relief. This arrangement benefits both the donor and the Friends. Further details may be obtained from the Hon. Treasurer.



STELLA STEYN (1907-1987)
Lady in a Cloche Hat
Pencil on paper
15.24 x 17.78
IRISH MUSEUM OF MODERN ART

LILY YEATS (1866-1949)
The Meadow
Needlework on card
25.5 x 33
NATIONAL GALLERY OF IRELAND
(YEATS MUSEUM)



WILLIAM SCOTT (1913-1989)
Cornish Harbour
Lithograph
34 x 40
To be presented

MICHEAL FARRELL (1940-2000)
Madonna Irlanda
Mixed media
56.2 x 76.5
IRISH MUSEUM OF MODERN ART

